

***Assess current and future resource requirements to identify potential skills gaps and resource shortfalls.***

- 
1. ***Do you find it hard to know what resources you need and whether they're going to be available when you need them?*** ✓
  2. ***Are you struggling to make the best use of your resources? At different times you might not be making the best use of your existing resources, or be held up by lacking the resources you need.*** ✓
  3. ***Would you like an updated Resource Requirements Report and Resource Availability Assessment every month?*** ✓
- 

## Your challenge

You know what changes you need to make to meet your organisation's objectives. But with increasing pressure on resources in a complex environment, you have no way of knowing whether you are over-committing your organisation.

If you don't have the people, funds and other key resources required to deliver then how can you take a structured approach to identifying, quantifying and mitigating capacity gaps? Failure to identify these needs results in bottlenecks, conflicts and under-delivery.

Accurate project resourcing modelling and planning is essential to the smooth operation of any Project Management practice.

Many organisations do not efficiently model and plan their requirements for resources and are forced to react quickly to new demands from the business. This can mean that resource peaks and troughs cannot be effectively managed, leading to periods of resources being underutilised or resources being unavailable when they are required.

## Our solution

We work with your organisation to analyse the resources required for your project portfolio, quantifying any potential surpluses or gaps. This provides management with the information they need to effectively mitigate any resource imbalances – by addressing either the supply or demand sides of the equation. Within our proven framework, we will:

- Analyse key areas – encouraging high level, enterprise-wide thinking as opposed to micromanagement;
- Ensure leadership 'buy-in' – involving the management team to be prepared and able to take mitigating actions. Capacity management only works if it informs good decision-making (for example, by prioritisation);
- Demonstrate the need for capacity management as a 'continuous improvement' mindset that must be nurtured and enhanced.



Our dedicated team will work with your stakeholders from key parts of your organisation. We will identify, analyse and mitigate capacity constraints. An added benefit is that, through the process, we often instill an increased awareness of capacity constraints through the organisation.

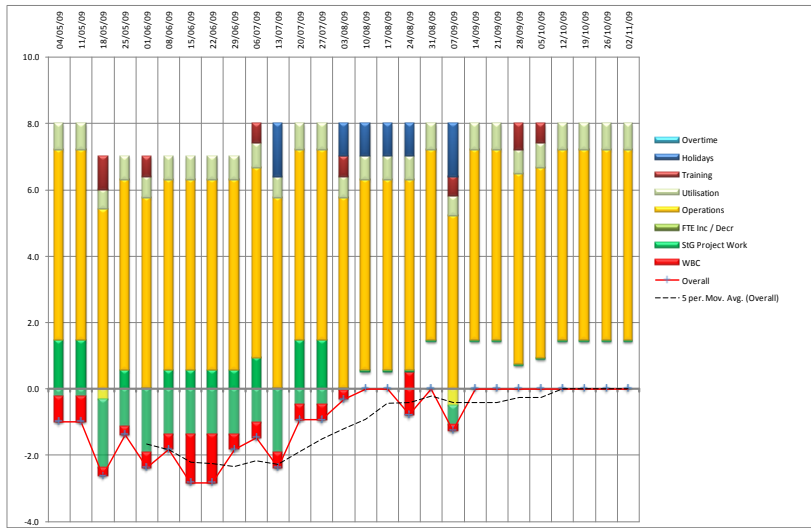
## Working with you

Using a proven set of capacity planning tools (unique to Wired Consulting) we will highlight the key resource requirements, availability and constraints of your organisation.

We will present a detailed report to your selected stakeholders.

As well as the resource profile, we will deliver key recommendations to improve ongoing resource planning.

The tools visualise trending data to smooth individual project peaks and troughs.



## Benefits of the service

1. Provides a 6 month horizon of resource requirements and availability.
2. Model can be adjusted to highlight individual project priorities.
3. Report delivered on your PowerPoint template for internal distribution.
4. Can be maintained monthly as a service for minimal cost.
5. Reduces risk associated with project resourcing.

## Pricing

Pricing is based on the size of the resource pool under assessment e.g.

Resource Pool	Up to 20	21-50	51-100
Establishment	\$9,950	\$14,950	\$19,950
Monthly Update	\$1,950	\$99 per resource	

